

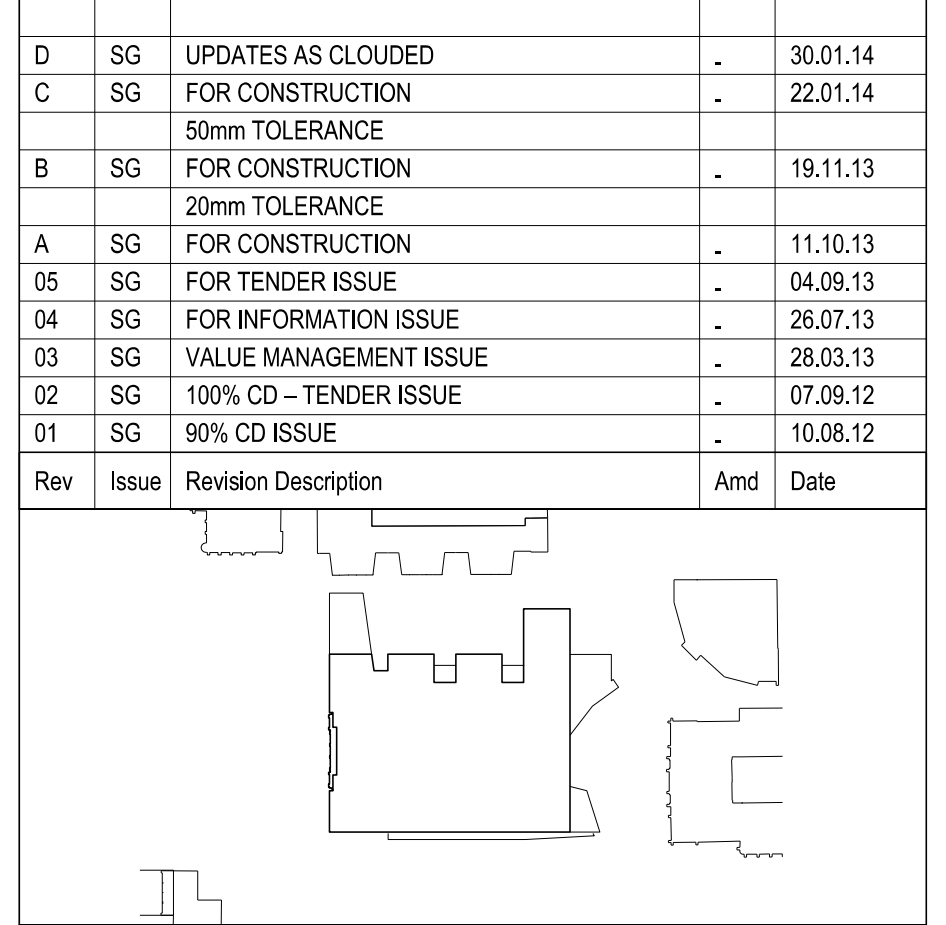
THIS DRAWING IS AN UNCONTROLLED COPY UNLESS STAMPED OTHERWISE  
 CONTRACTORS SHALL VERIFY DIMENSIONS BEFORE ANY JOB COMMENCES.  
 ALL SHOP DRAWINGS SHALL BE SUBMITTED TO THE SUPERINTENDENT AND MANUFACTURE  
 SHALL NOT COMMENCE PRIOR TO THE RETURN OF DIMENSIONS FROM DRAWINGS REVIEWED  
 BY THE CONSULTANT. FIGURED DIMENSIONS SHALL TAKE PRECEDENCE OVER SCALED THE  
 DRAWING. PROCEED WITH CONSTRUCTION WITH ALL RELEVANT CONTRACT SPECIFICATIONS  
 AND DRAWINGS COPYRIGHT OF THIS DRAWING IS VESTED IN INVOLVE.

- General Notes
1. ALL PANELS ABUTTING PARTITIONS OR STRUCTURE SHALL BE FIELD-VERIFIED FOR FINAL DIMENSIONS.
  2. SEE SHEETS AR7600 AND AR7801 FOR CL-05 CEILING DETAILS.
  3. G.C. TO COORDINATE ALL LIGHT FITTINGS AND LENGTHS W/ MESH CEILING SYSTEM.

WINDOW BLIND LEGEND:

---	MANUAL ROLLER BLIND
BC-01	TYPICAL WORKSPACE BLIND
BC-02	TYPICAL JR FACADE BLIND
S1	BLIND FOR FACADE TYPES FS-01 & FS-02 ON NORTH, NORTH-EAST & NORTH-WEST ELEVATIONS.
S2	SAME AS S1 BUT W/ VARIOUS WIDTHS.
S3	BLIND FOR FACADE TYPE FS-08 ON LEVEL 1 SOUTH.
S4	SAME AS S3 BUT W/ SHORTER WIDTH.
S5	BLIND FOR FACADE TYPE FS-05 ON EAST, NORTH-WEST & SOUTH-WEST ELEVATIONS.
S6	SAME AS S5 BUT W/ SHORTER WIDTH OR AT LOCATION OF ACCESS WINDOW.
S7	BLIND FOR FACADE TYPE FS-07 ON SOUTH WALL, WIDTH VARIES.
S8	BLIND FOR FACADE TYPE FS-11 ON SOUTH WALL, EXCEPT LEVEL 4 CLEARESTORY, WIDTH VARIES.
S9	BLIND FOR FACADE TYPE FS-11 ON SOUTH WALL, LEVEL 4 CLEARESTORY.
S10	BLIND FOR EXTRA LARGE FACADE TYPE FS-11 ON SOUTH WALL LEVEL 4 CLEARESTORY.
S11	BLIND FOR FACADE TYPE FS-04 ON EAST ELEVATION, WIDTH VARIES.

Rev	Issue	Revision Description	Amd	Date
D	SG	UPDATES AS CLOUED	-	30.01.14
C	SG	FOR CONSTRUCTION	-	22.01.14
		50mm TOLERANCE		
B	SG	FOR CONSTRUCTION	-	19.11.13
		20mm TOLERANCE		
A	SG	FOR CONSTRUCTION	-	11.10.13
05	SG	FOR TENDER ISSUE	-	04.08.13
04	SG	FOR INFORMATION ISSUE	-	28.07.13
03	SG	VALUE MANAGEMENT ISSUE	-	28.03.13
02	SG	100% CD - TENDER ISSUE	-	07.08.12
01	SG	90% CD ISSUE	-	10.08.12



**NADAAA**  
 NADAAA  
 1320 Washington Street No.2  
 Boston Massachusetts  
 02118 USA  
 Telephone: +1 617 442 8232  
 Facsimile: +1 617 442 1417  
 Email: nad@nadaaa.com  
 nad@nadaaa.com

**John Warl Architects**  
 © 2011 John Warl Architects  
 Level 10, 180 Russell Street, Melbourne Victoria 3000 Australia  
 Tel : +613 9654 8700 www.johnwarlarchitects.com

Client **University of Melbourne Parkville Campus**  
 Project **Faculty of Architecture Building and Planning**  
 Title **RCP - LEVEL 03 SETOUT**

Project No.	<b>0913</b>	Scale	1:100
Drawing No.	<b>AR2505</b>	Revision	<b>D</b>
Date	JAN 2014	Drwn	-
Co-Ord	-	Check	-

FILENAME: #####  
**FOR CONSTRUCTION**